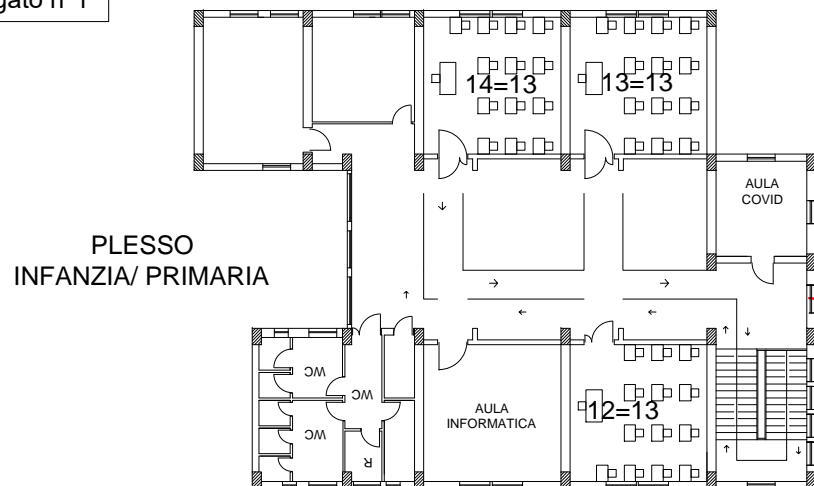


PRIMARIA- PLESSO TELESIO - INGRESSO 7:50

Allegato n°1

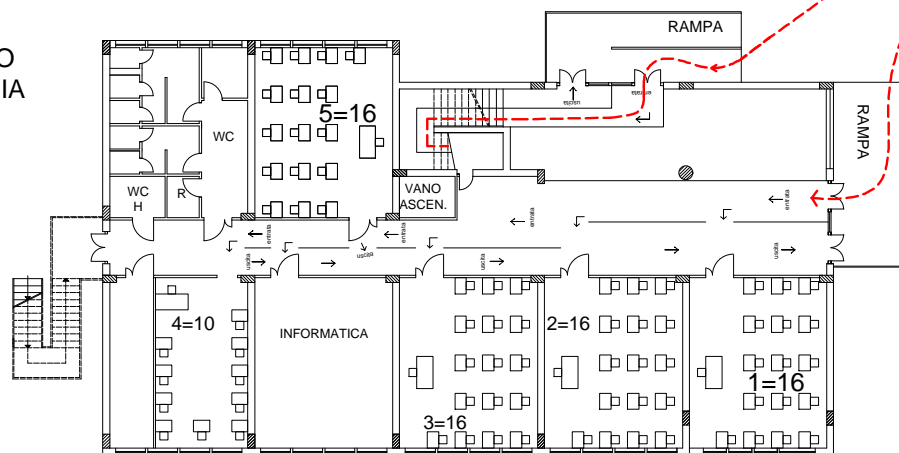


PLESSO
INFANZIA/ PRIMARIA

INGRESSO
PRINCIPALE

CLASSI **4C 5A 5C**
INGRESSO H 7:50
USCITA H 12:50

PLESSO
PRIMARIA



PALESTRA

INGRESSO
PALESTRA
CLASSI **2A 2C**
INGRESSO H 7:50
USCITA H 12:50